



## **ArkData Arkive™ Installation Guide**

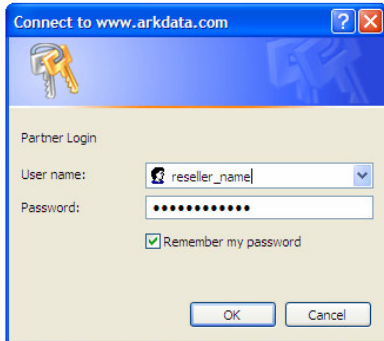
Copyright © 2009 Arkdata, LLC, All rights reserved

### **Revision**

This installation guide is intended for installation with Revision 1.20-1.21 of the ArkData Arkive product.

## Step 1 – Installing External USB Drives

Please go to the [www.arkdata.com/reseller](http://www.arkdata.com/reseller) web site. Enter your User name and Password. If you do not know it, please contact reseller support at 1-888-ARK-1492 or send an email to [reseller@arkdata.com](mailto:reseller@arkdata.com).



Press the “OK” button to continue.

You will see the following:

### Installing ArkData USB Devices Document Download:

- [Installing ArkData USB Devices.pdf](#) (117KB)

Select “Installing ArkData USB Devices.pdf” and follow the instructions to install the external USB drives.

## Step 2 – Installing the ArkData Arkive Software

Please go to the [www.arkdata.com/reseller](http://www.arkdata.com/reseller) web site. If you are not already on the site, please enter your User name and Password. If you do not know it, please contact reseller support at 1-888-ARK-1492 or send an email to [reseller@arkdata.com](mailto:reseller@arkdata.com).

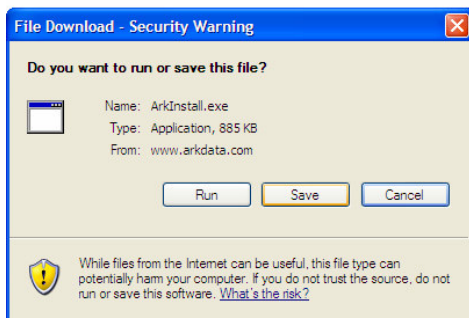
You will see the following:

### ArkData Arkive™ Installer Download

- Download ArkData Arkive™ Installer [ArkInstall.exe](#) (880KB)
- Execute the install program.
- Follow installation instructions.

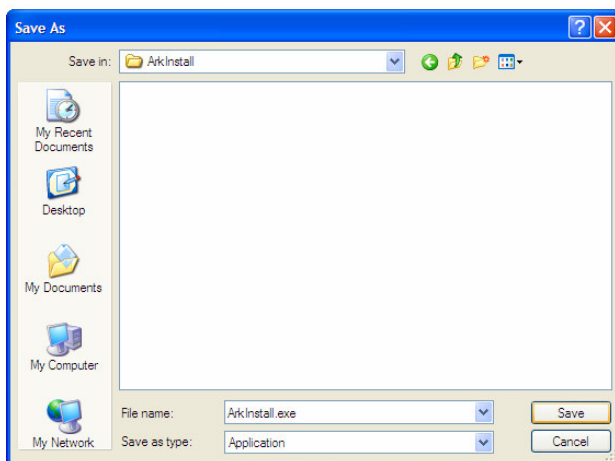
Select “ArkInstall.exe” to download the installation software.

Your browser may give you a message like the following:



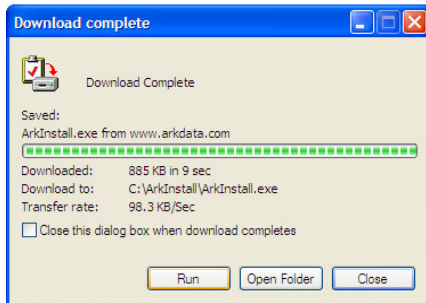
Select “Save” to save the Installation File.

It is recommended to save the file ArkInstall.exe into the folder C:\ArkInstall.

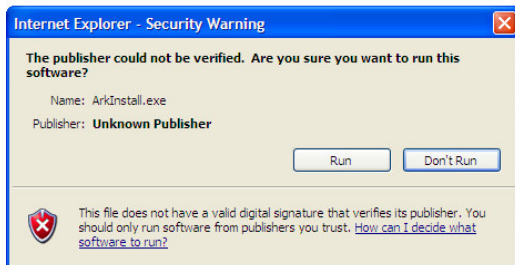


Select “Save” to continue.

When the download is complete, you may run the install by selecting “Run”.  
Or, using Windows Explorer, go to the C:\ArkInstall folder and run the install by double-clicking on ArkInstall.exe.



Your browser may give you a warning if you run the program. Select “Run” to run the ArkInstall program or go to the C:\ArkInstall folder and run the install by double-clicking on ArkInstall.exe.

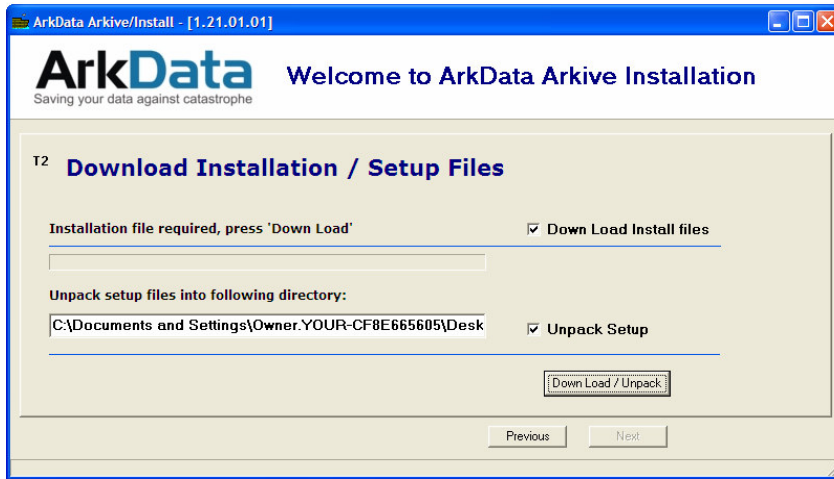


When the Installation program starts, you will see this screen. Please enter the Site Name and Registration ID for this Installation. If you do not have it, please contact reseller support at 1-888-ARK-1492 or send an email to [reseller@arkdata.com](mailto:reseller@arkdata.com).



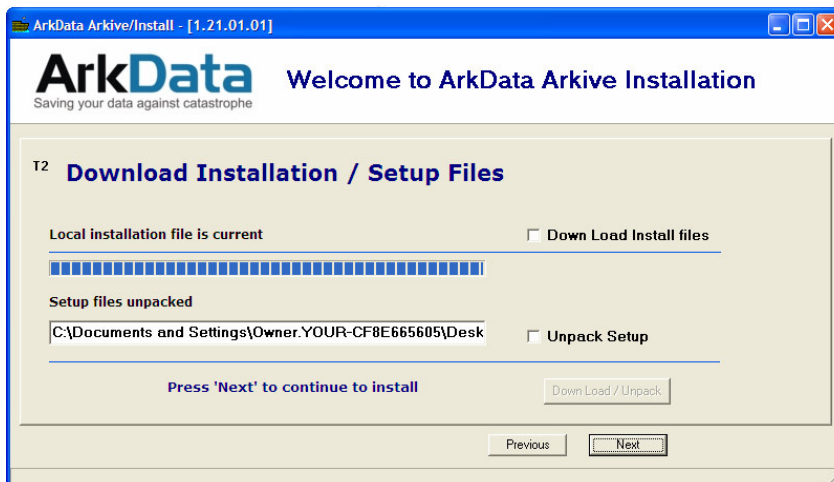
After entering the information, select the “Register” button.

You will see the following. Leave the defaults as is unless you need to change anything.



Select the “Down Load / Unpack” button.

The installation files will be downloaded and you will see the following.



Select “Next” to continue.

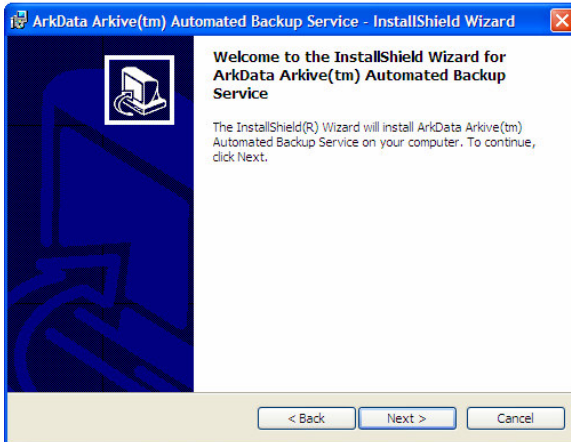
You will see the following to begin the setup process. Select “Run Setup”.



To continue the Installation process, select “Next”.



You will see the following.



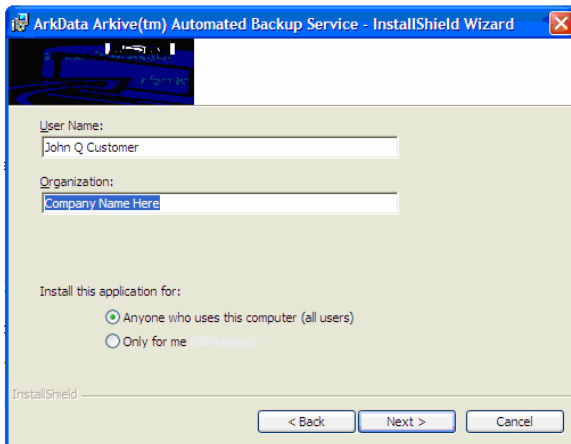
Select the “Next” button to install the Automated Backup Service.

Please read carefully the Software License Agreement.



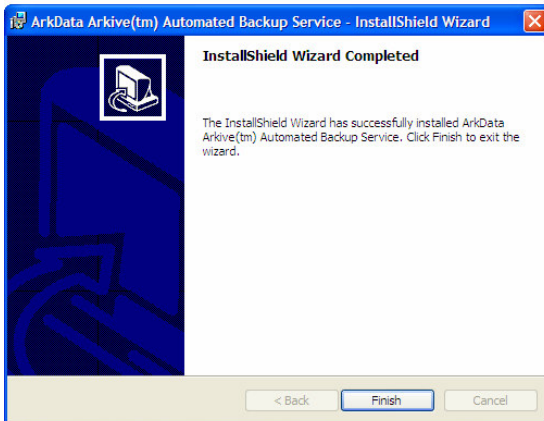
If you agree with the License Agreement, select “I accept...” and then select the “Next” button.

Enter the End User Information: User Name and Organization.



Select whether or not All Users may run the Automated Backup Service, or only the User who is performing the installation. Then select the “Next” button to continue.

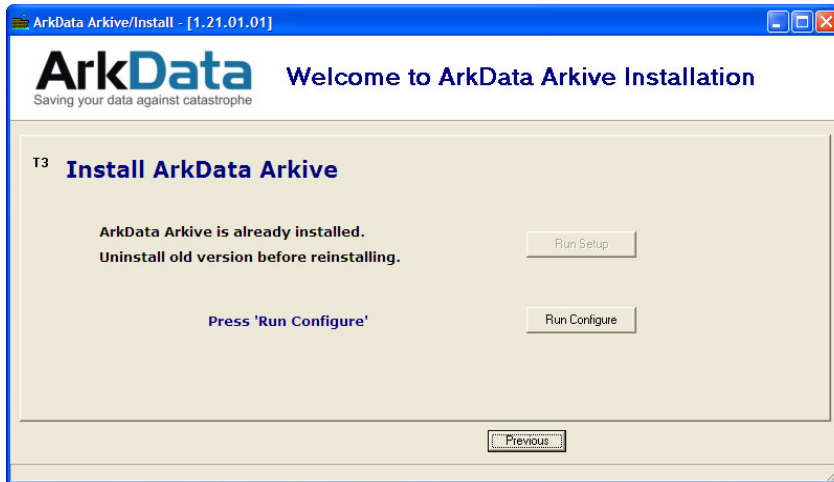
When the installation is complete, you will see the following.



Select “Finish” to go to the next step.

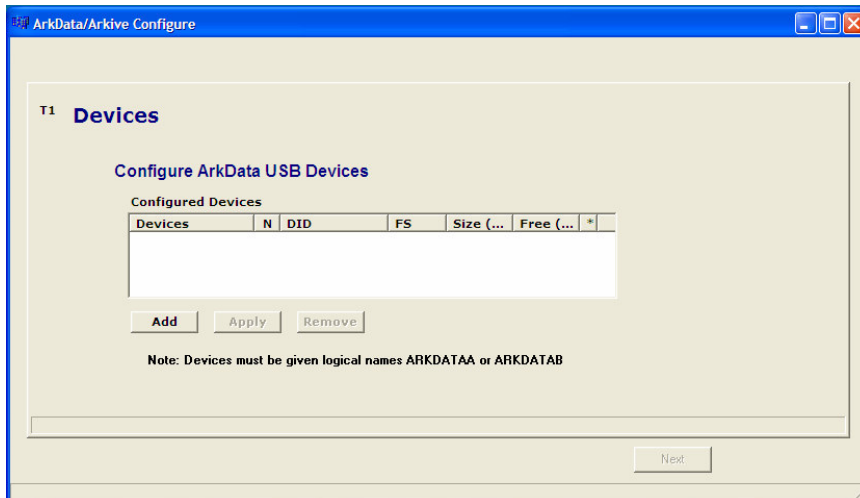
### Step 3 – Configuring the ArkData Arkive Software

After the completion of the Installation process, you will see the following.



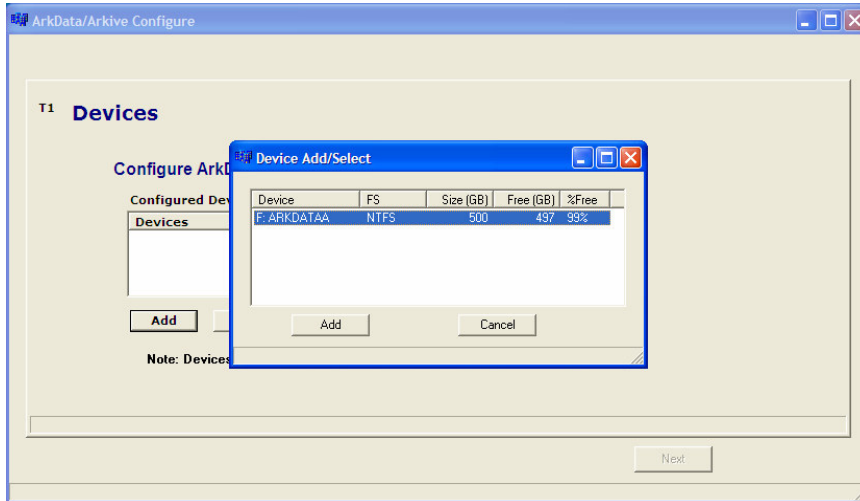
Select “Run Configure” to begin the configuration process.

You should already have installed your external USB devices. They will need to be configured in the ArkData system.

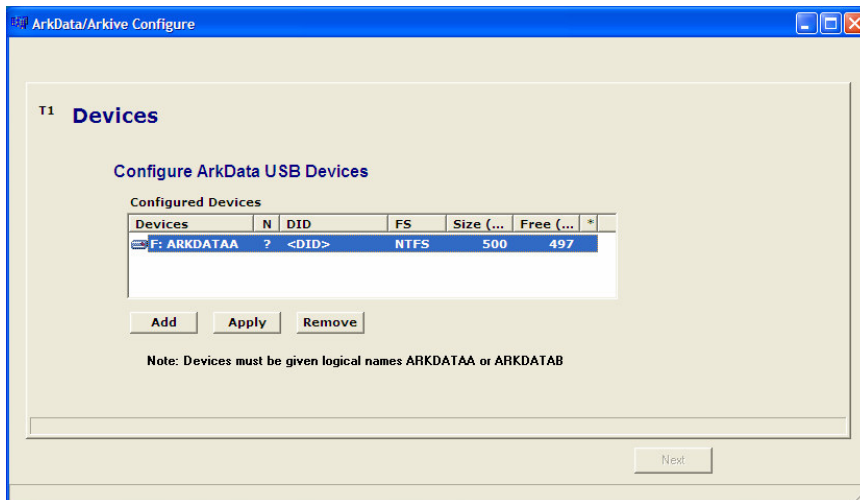


Select “Add” to configure your installed USB devices.

You may add one or two devices. Note they must be named “ARKDATAA” and “ARKDATAB”.

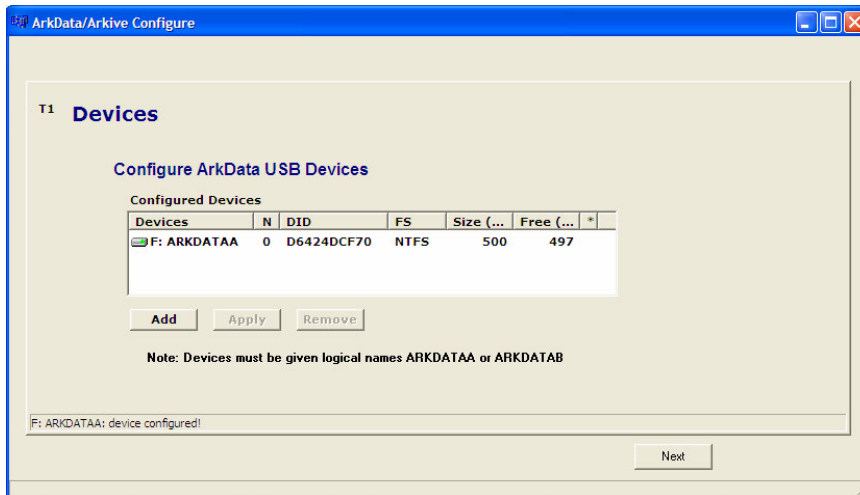


Select “Add” to add the USB device.



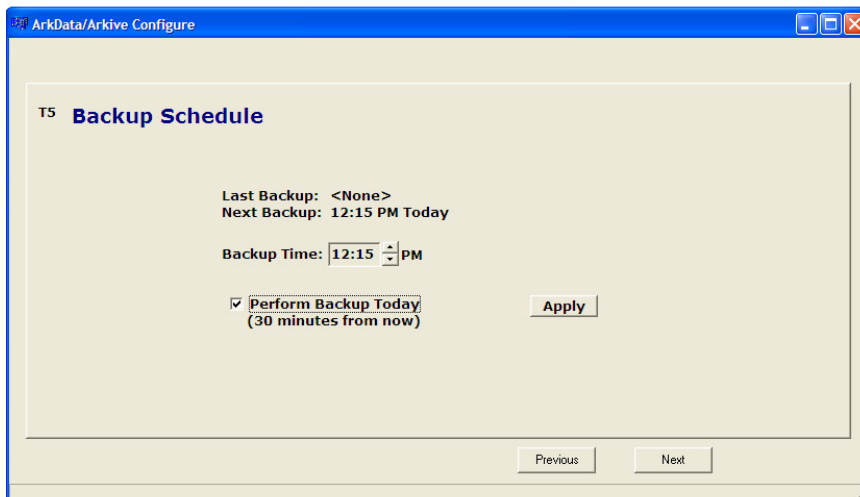
Select “Apply” to apply the USB Device to the configuration.

Repeat the process to add the second USB Device if applicable.



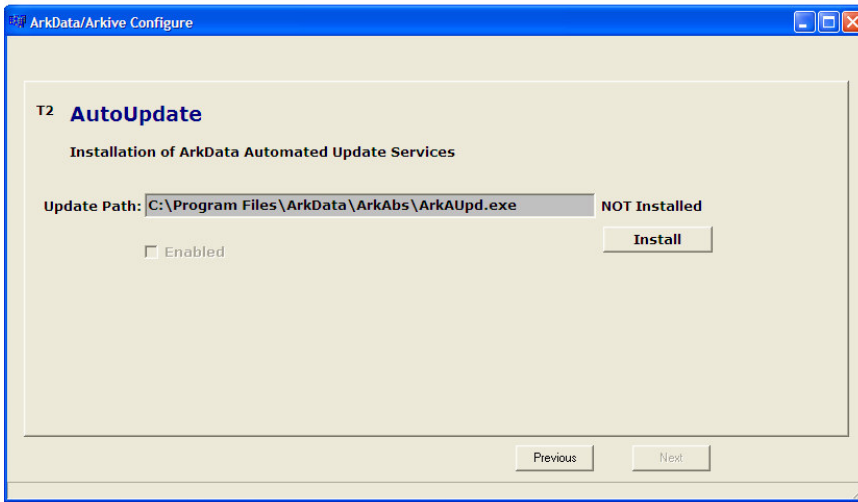
When finished adding USB devices, select “Next”.

You will see the following. You will need to decide what time of day you want the system backed up, and whether or not you want to begin today or tomorrow.



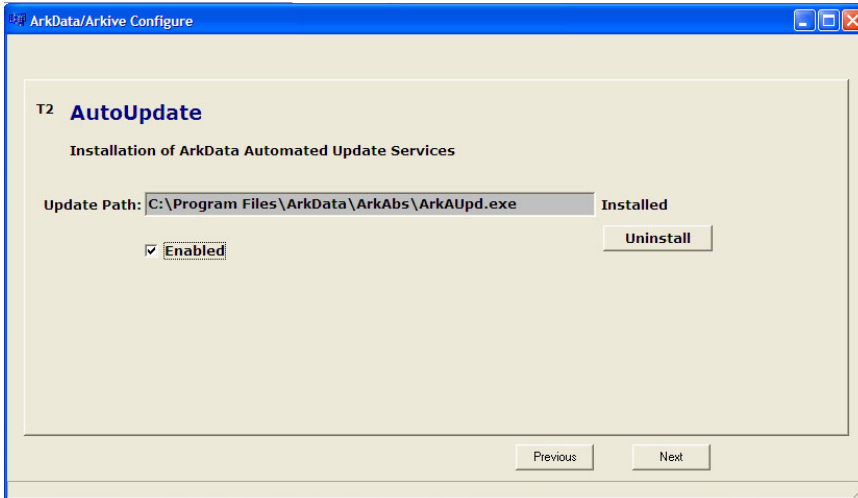
Enter the appropriate information and then select “Apply”.  
Then select “Next”.

You will see the following, asking you to install the Automated Update Service. This is the Service that keeps the software current.



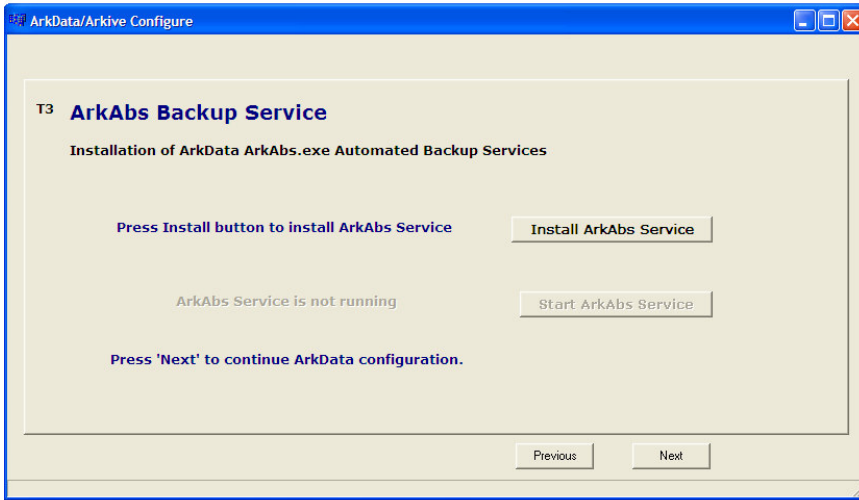
Change the pathname if you need to. Then select “Install” to install the Automated Update Service.

Select the checkbox to enable the Service.

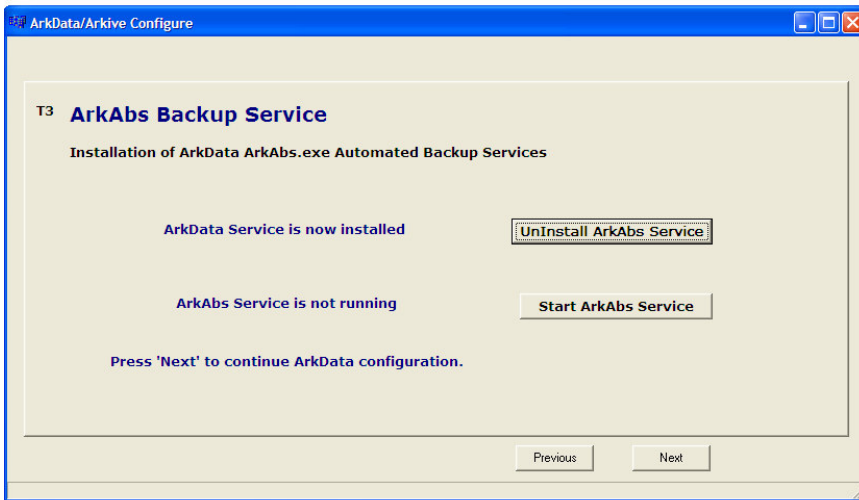


Select “Next” to continue.

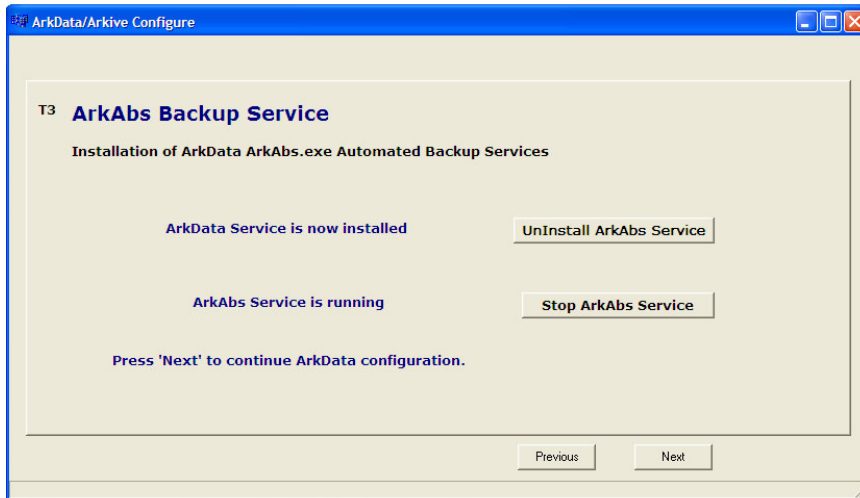
Select “Install ArkAbs Service” to complete the installation of the Automated Backup Service.



Select “Start ArkAbs Service” to begin running the Automated Backup Service.

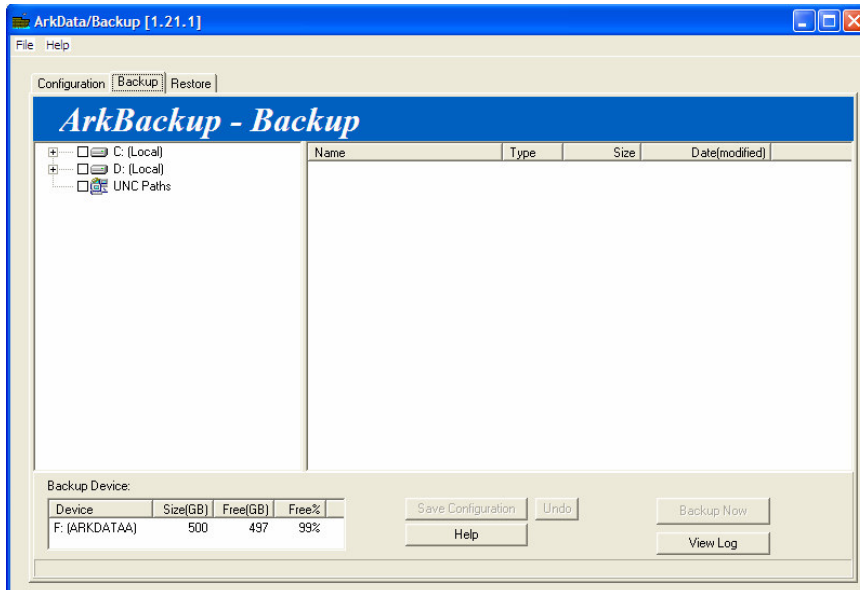


You will see the following. The Service is now running.

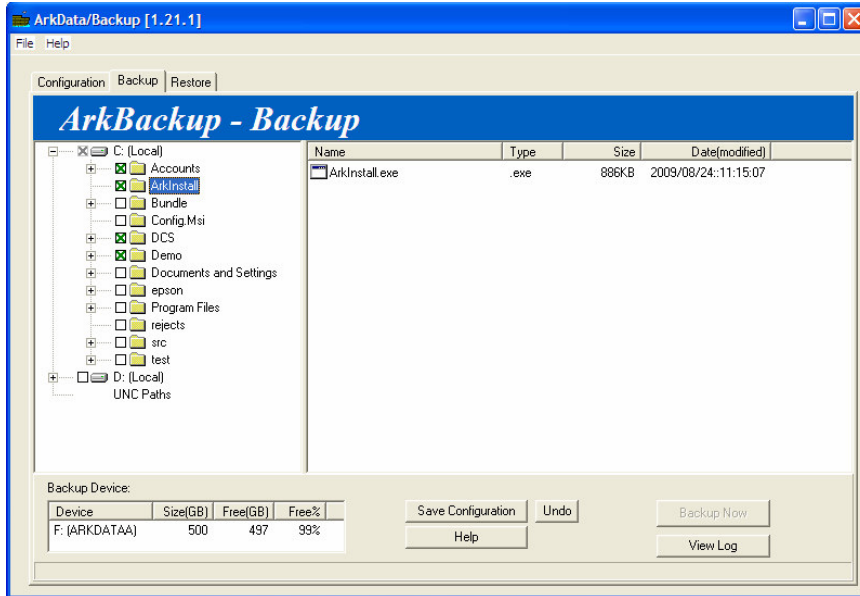


Select "Next" to continue.

Select the "Backup" Tab to select which files you want backed up. You may want to select the entire C: drive.

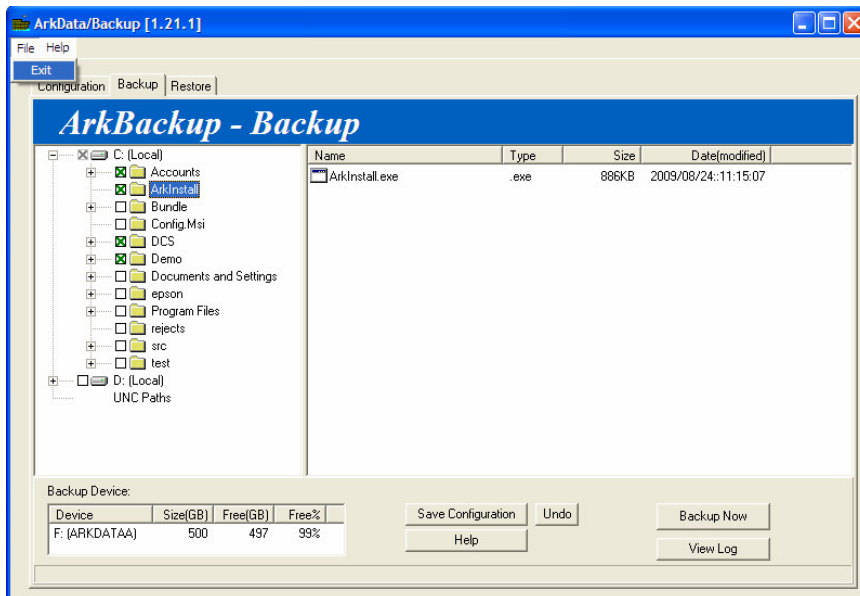


In this example, various folders under the C: Drive are being selected.

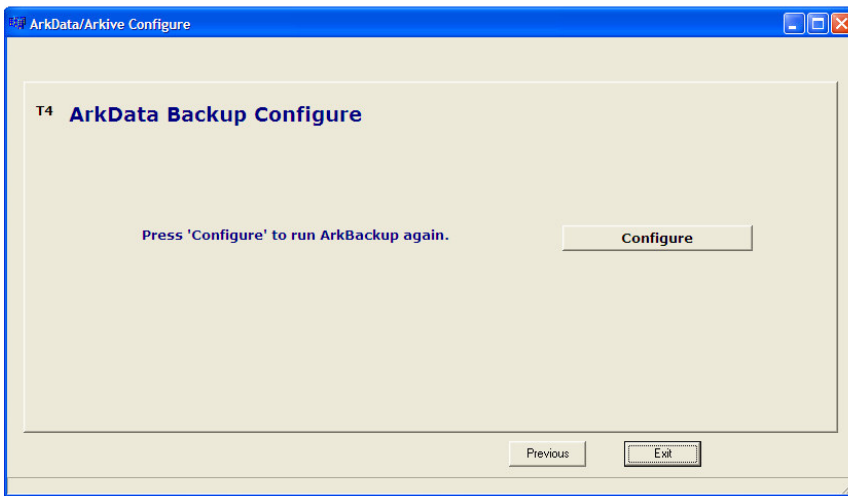


When done, select “Save Configuration”.

To exit the Configuration program, Select File -> Exit on the Menu.



If you want to change the configuration before you exit, select the “Configure” button below.



Otherwise, select the “Exit” button and you are done!

The configuration program can be found in the folder C:\Program Files\ArkData\ArkAbs, with the name “ArkConfigure.exe”.

For support issues or questions, please contact us at 1-888-ARK-1492 or send an email message to [support@arkdata.com](mailto:support@arkdata.com).