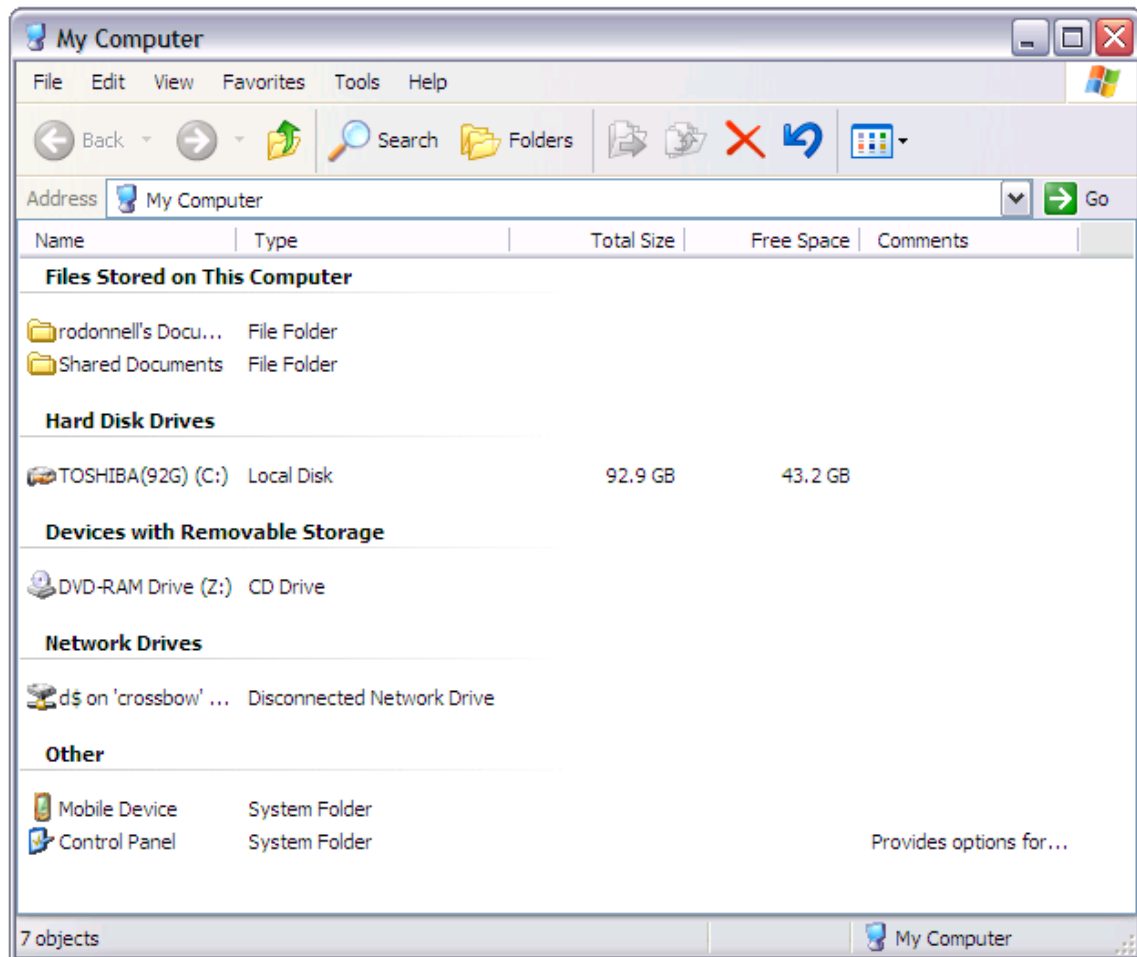


Installing ArkData USB Devices

ArkData Arkive™ software that requires that the first USB device be named ARKDATAA, and the second device (if you have one) to be named ARKDATAB.

Installing the First Device

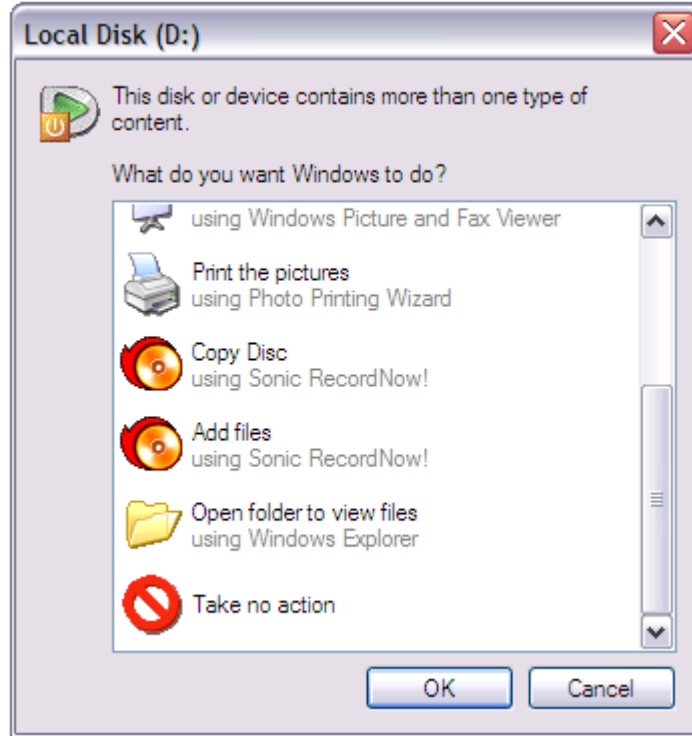
With your mouse, double click on the DeskTop *My Computer*. The following screen should be displayed:



(Windows XP – *My Computer*)

Take the device out of the package. Before you plug it into the USB port of your machine, place a label (sticker) on the device clearly displaying the letter “A”. If you have a sticker provided by ArkData, use that.

Connect the USB cables to the device and plug it into an available USB port. A small popup window may be displayed:



(Popup Display – After USB connect)

Select *Take no action* and press the “OK” button.

On your *My Computer* display under **Hard Disk Drives** an entry for your newly added USB device should now appear. See “Local Disk” (D:) entry here:

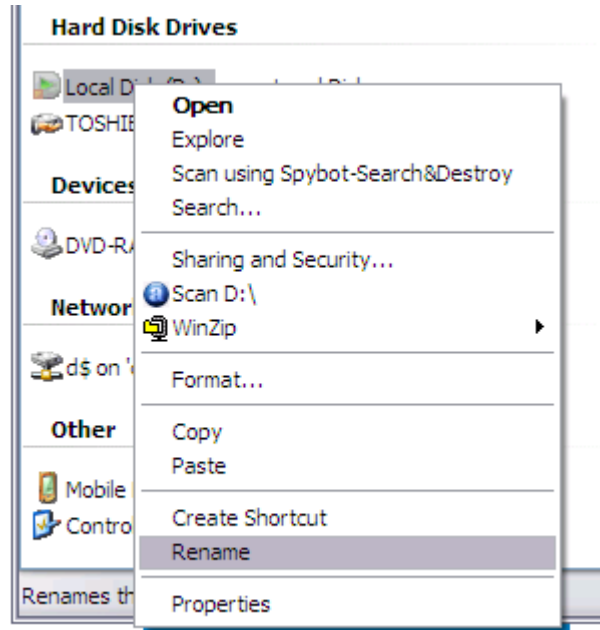
| Hard Disk Drives | | | |
|--------------------------------|------------|---------|---------|
| Local Disk (D:) | Local Disk | 465 GB | 465 GB |
| TOSHIBA(92G) (C:) | Local Disk | 92.9 GB | 43.2 GB |
| Devices with Removable Storage | | | |
| DVD-RAM Drive (Z:) | CD Drive | | |

(*My Computer* – Local Disk (D:))

Note: Depending on your device’s manufacturer, a different name (other than “Local Disk”) may have been assigned.

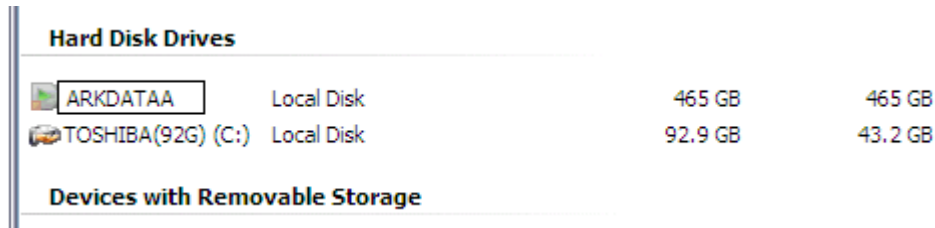
Note: If the USB device name does not appear, it may be that you have too many mapped drive letters. Try disconnecting (Menu: Tools: Disconnect Network Drive ...) one of the lower drive letters (D, E, ...), and your USB device should appear.

With the right mouse button, select Local Disk entry. A popup menu should appear (below):



(My Computer – Device Rename)

Select Rename.



(My Computer – ARKDATAA)

Rename (type) the Local Disk to: ARKDATAA

Type in all caps and note second A of ARKDATAA.

You have now finished with the first ArkData device. If you have a second USB device, proceed to the next section, *Installing the 2nd USB Device*.

Installing the 2nd USB Device

You are now going to install and name the 2nd ArkData USB device.

Repeat the steps of the previous section, **Installing the 1st USB Device**, except that you will now name the 2nd device ARKDATAB.

Note: Don't forget to label (sticker) your 2nd device as B.

When you have finished, your *My Computer* **Hard Disk Drives** should now have two devices appearing; one named ARKDATAA and the 2nd, ARKDATAB. See below:

| Hard Disk Drives | | | |
|------------------|------------|--------|--------|
| Local Disk (C:) | Local Disk | 148 GB | 108 GB |
| ARKDATAA (D:) | Local Disk | 465 GB | 449 GB |
| ARKDATAB (H:) | Local Disk | 465 GB | 450 GB |

| Devices with Removable Storage | |
|--------------------------------|--|
|--------------------------------|--|

(*My Computer* – ARKDATAA and ARKDATAB)

Note: your drive letters (D:, H:) may be different, depending on your system configuration.

You have now finished installing two ArkData USB devices.